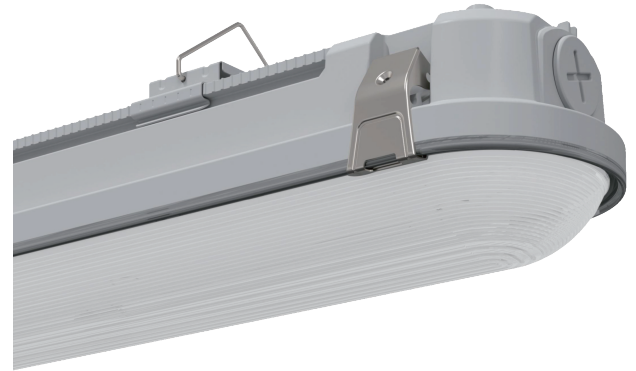
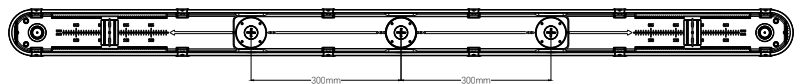
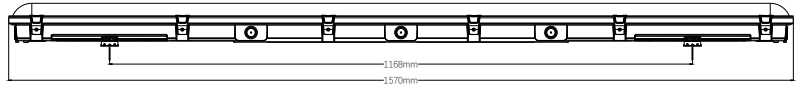


- ★ Robust Polycarbonate body with uniform light distribution
- ★ Built with Quality Driver and 2835 LED Chip
- ★ 50,000 hours life with 5 years warranty
- ★ Can be wall mounted and ceiling mounted
- ★ PC Lens with high lumen output
- ★ Multi Wattage Option
- ★ IP66 & IK10
- ★ EM packs&MW Sensor available



PHOTON

Applications: Indoor & Outdoor
Specifications



	Replaces	Standard
	Part Code	BPH5FT58CCT PHOTON
	Trade Price	
Luminescence	Light colour	3000K/4000K/6500K
	Ra, Consistency	>80
	Luminous flux	8120lm
	Beam angle, light intensity	120 Degree
	Accent Lighting	Yes
	Warm up time	Instant
	Dimmable	No
Wattage Option	58W/48W/38W/29W	
Technical	Power input (50-60Hz AC)	220-240V
	Power factor & Current	>0.9
	Lamp type	2835
	Fire rated	No
	Working temperature	-20-40°C
	Construction	Polycarbonate
	IP & IK rating	IP66 &IK10
Efficiency	Energy Efficiency Label	D
	EC(Energy consumption)	57KWH/1000H
	Lifetime	50,000H
	Building Regs - Part L	Yes
	Warranty & LMF at EoL	5 Years, 50%
	Switching cycles	25000

This document is not contractual and the equipment specification may be modified at any time without prior notice.

